

[]

TEMS™ DISCOVERY DEVICE



[]

AGENDA

- Product Overview
- The Solution and Benefits
- Capabilities
- TEMS Discovery Options
- TEMS Discovery Suite
- Key Features
- Summary



[]

PRODUCT OVERVIEW



PRODUCT OVERVIEW

TEMS Discovery Device is a wireless network reporting & analysis tool

- Automatic post processing of air interface measurement data
- Analyzing, organizing, storing, and sharing of information collected from wireless network devices
- On-demand data extraction, analyzing, presentation, visualization and reporting



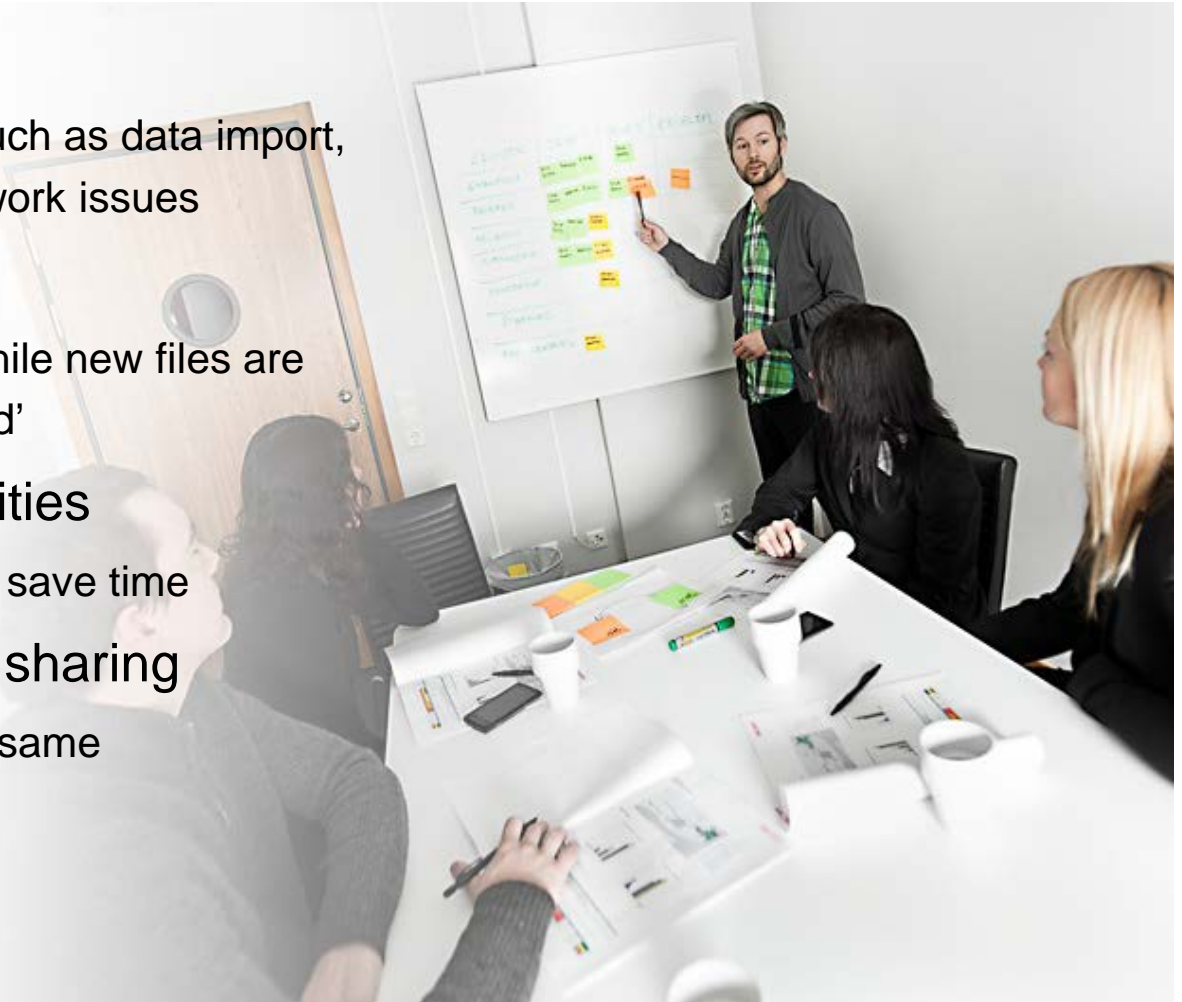
[]

THE SOLUTION AND BENEFITS



EFFICIENT USE OF ENGINEERING TIME

- Automatic data processing
 - Automate time-consuming tasks such as data import, and analyzing and pinpointing network issues
- Background post processing
 - Lets engineers continue to work while new files are being processed 'in the background'
- Customized reporting capabilities
 - Easily created, customized reports save time
- Knowledge and best practice sharing
 - All engineering teams can use the same methodology and processes



NETWORK ANALYSIS & REPORTING

- Full decoding of metrics and events
- Customizable problem detection and analysis
- Any KPI can be defined and reported automatically
- Supports all major wireless technologies
LTE, TD-LTE, EV-DO (Rev. 0/A/B), WCDMA/HSDPA/HSUPA/HSPA+,
WiMAX, IS-95/cdma2000 1x, GSM/GPRS/EDGE,
TD-SCDMA, Wi-Fi
- Supports measurements from:
TEMS™, JDSU™, Nemo™, Qualcomm™
ZK Celltest™, LG™, PCTEL™, Rohde & Schwarz™



AN APPROACH TO OPERATIONAL EFFICIENCY

Report and script packages that solve the problem.

Example:

- VoLTE
- Indoor/DAS
- Benchmarking
- WCDMA – Root cause diagnostic



[]

CAPABILITIES



WHAT IS NEW IN 10.0 (1 OF 2)

- Improved map functionality
- Enhanced composite functionality
- On-the-fly geographic binning to create “Heat Map” on any metrics and events
- IP Multimedia Subsystem (IMS) support for TEMS logfiles collected from Qualcomm-chipset based devices
- TEMS Investigation 15.0 support
- Support for Rohde & Schwarz ROMES



The world's most versatile data processing tool

WHAT IS NEW IN 10.0 (2 OF 2)

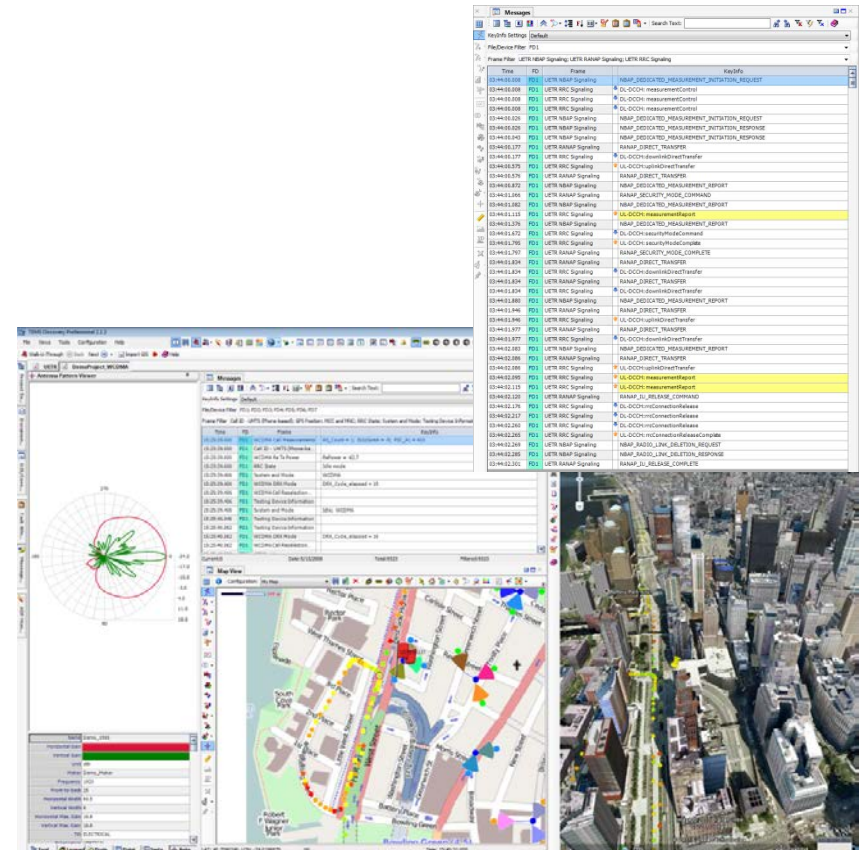
- Data streaming
- Enhanced MIMO support for PCTEL scanners
- WCDMA root cause analysis
- VoLTE package
- Indoor package
- Benchmarking reports



The world's most versatile data processing tool

VERSATILE DATA ANALYSIS

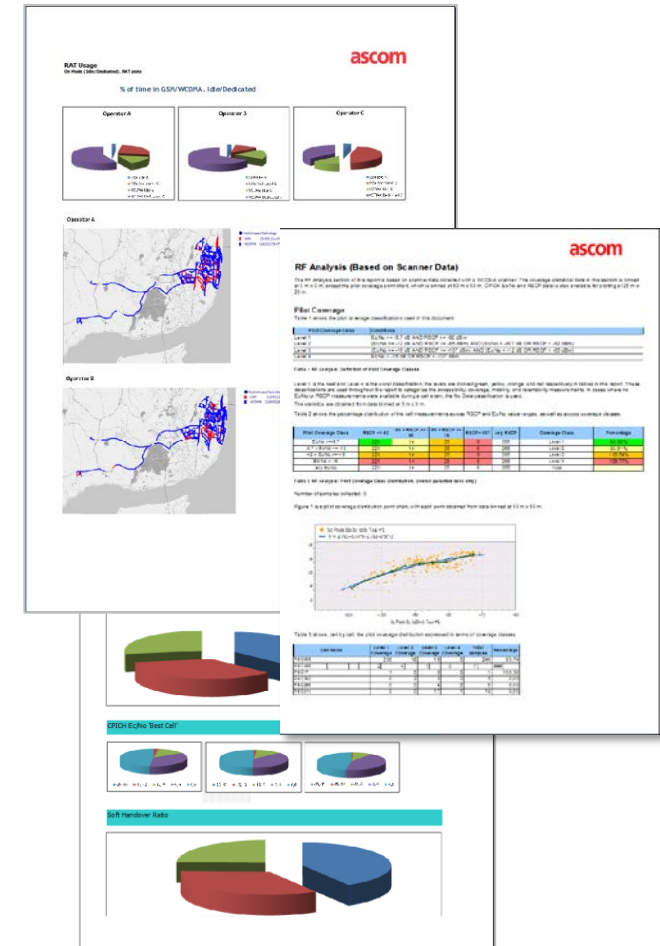
- Multiple data sources
 - Measurement data
 - Scanner and UE drive-test data
 - IP data (libpcap)
 - User Equipment Traffic Recording (Ericsson UETR)
 - GIS data
 - Support for more than 100 GIS formats
 - Integrated Google™ Maps or Microsoft Bing™ Maps
 - Network cell configuration and parameters, neighbor lists
 - Antenna pattern



Relevant input for relevant analysis

REPORTING & SCRIPTING

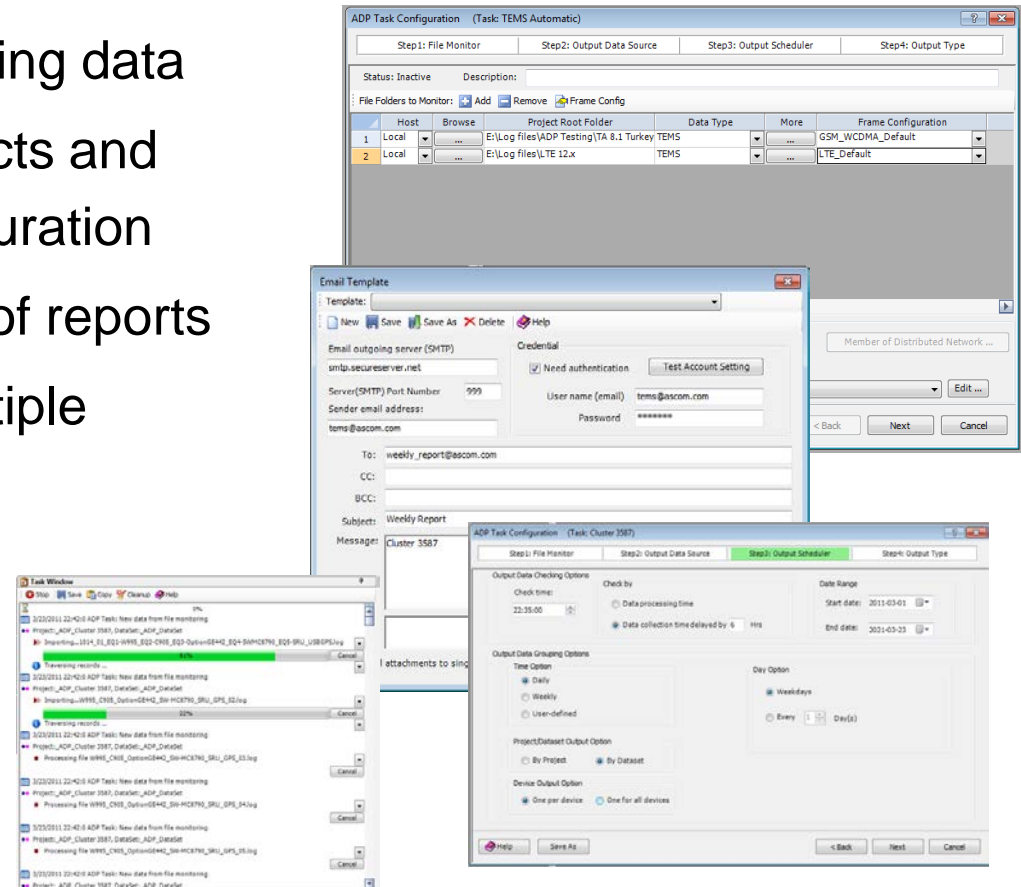
- Design your own reports, including tables, charts, and maps
 - Easy-to-use drag-and-drop configuration of report templates
- Make your own scripts for KPI calculations and problem finding and classification
 - Use Script Builder to create your own tailored scripts



Built-in scripting and reporting

AUTOMATIC DATA PROCESSING

- Monitoring and processing of incoming data
- Automatic creation of multiple projects and data sets according to user's configuration
- Automatic creation and distribution of reports
- Automatic email notifications to multiple recipients
- Easy and flexible configuration



Liberating precious and expensive RF engineering resources

COLLABORATION ACROSS THE ORGANIZATION

- Seamless data sharing
 - Via peer-to-peer & public data
 - No need for reprocessing of data
- Configuration sharing
 - Seamless knowledge transfer
 - Share scripts
 - Share report templates
 - Share problem sets
- Standardization of organizational processes



Collaboration (and value) across the organization

[]

TEMS DISCOVERY DEVICE OPTIONS



TEMS DISCOVERY DEVICE OPTIONS

- **TEMS Discovery Device**
- **Standard Feature Set:**
 - Post-processing tool for TEMS Investigation multiple logfile analysis
- **Professional Feature Set:**
 - Post-processing tool that can be tailored to fit into and improve your processes by combining logfiles from the major drive-test tool vendors



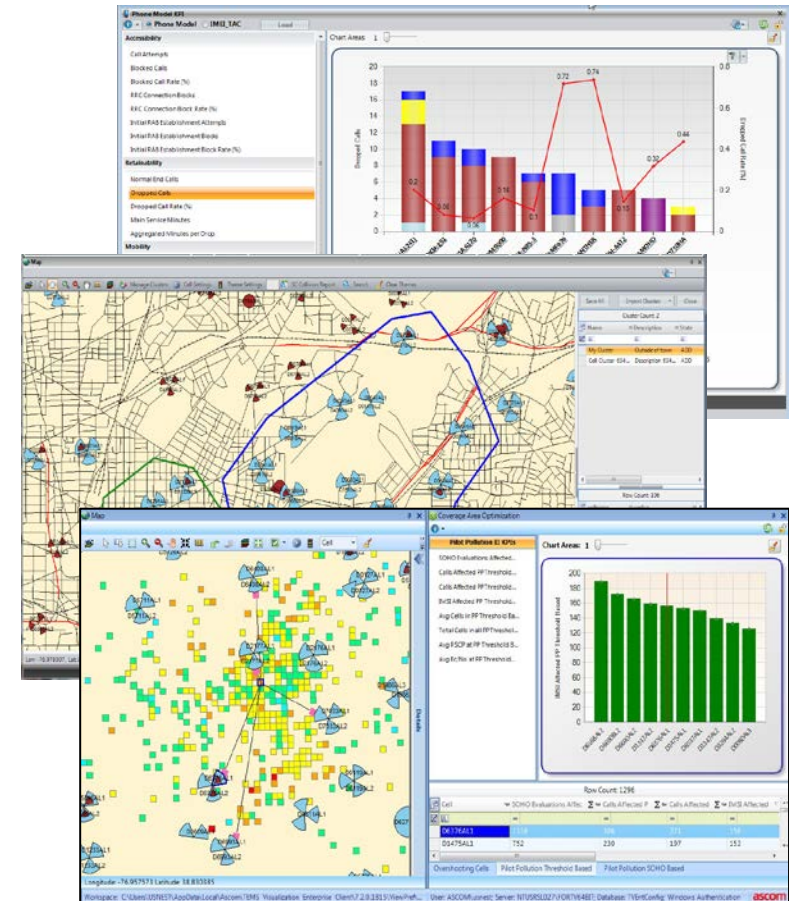
[]

TEMS DISCOVERY SUITE (COMPLEMENTARY PRODUCTS)



COMPLEMENTARY TEMS DISCOVERY PRODUCTS

- **TEMS™ Discovery Network** (formerly TEMS™ Visualization Professional)
 - Utilizes event data generated from large volumes of live subscriber traffic
 - Bridges the gap between performance management and drive test solutions
 - Cell, phone model, subscriber centric, and other advanced analysis, with ability to drill down to and geolocate individual calls
 - Prioritize and resolve larger volumes of problems, impossible to even identify before
 - Customer experience focused, operationally efficient, multivendor and multitechnology



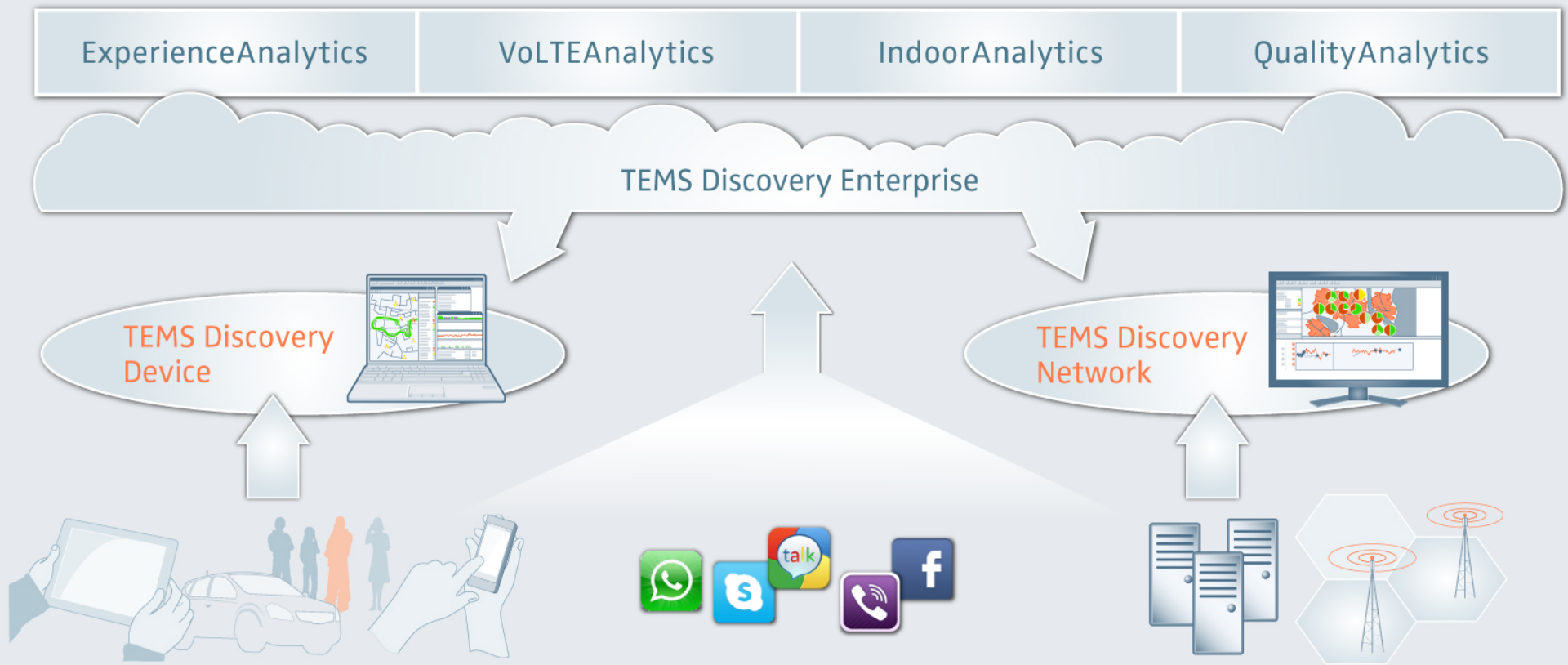
COMPLEMENTARY TEMS DISCOVERY PRODUCTS

■ TEMS™ Discovery Enterprise:

- New product added to TEMS Discovery product line
- Server-based solution
- Handles very large volumes of data
- Statistical data storage and trending
- Mobile dashboard
- Works in conjunction with the existing TEMS Discovery product line (TEMS Discovery Device and TEMS Discovery Network)



TEMS DISCOVERY SUITE OVERVIEW



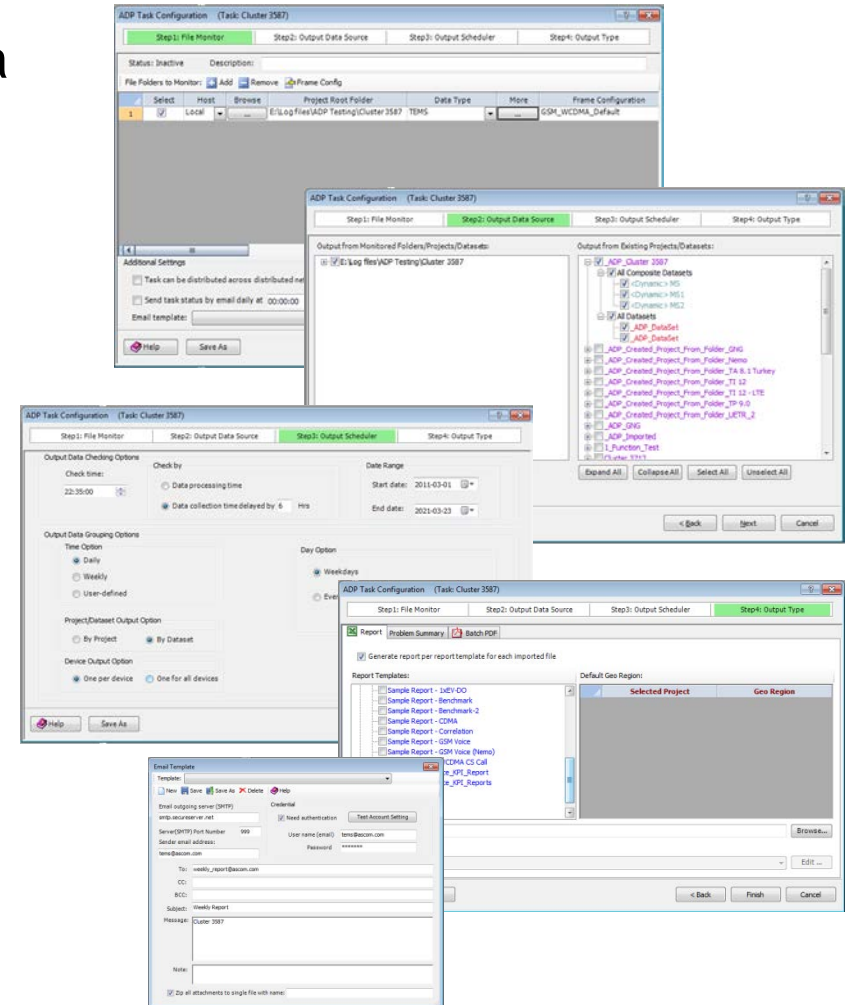
[]

KEY FEATURES



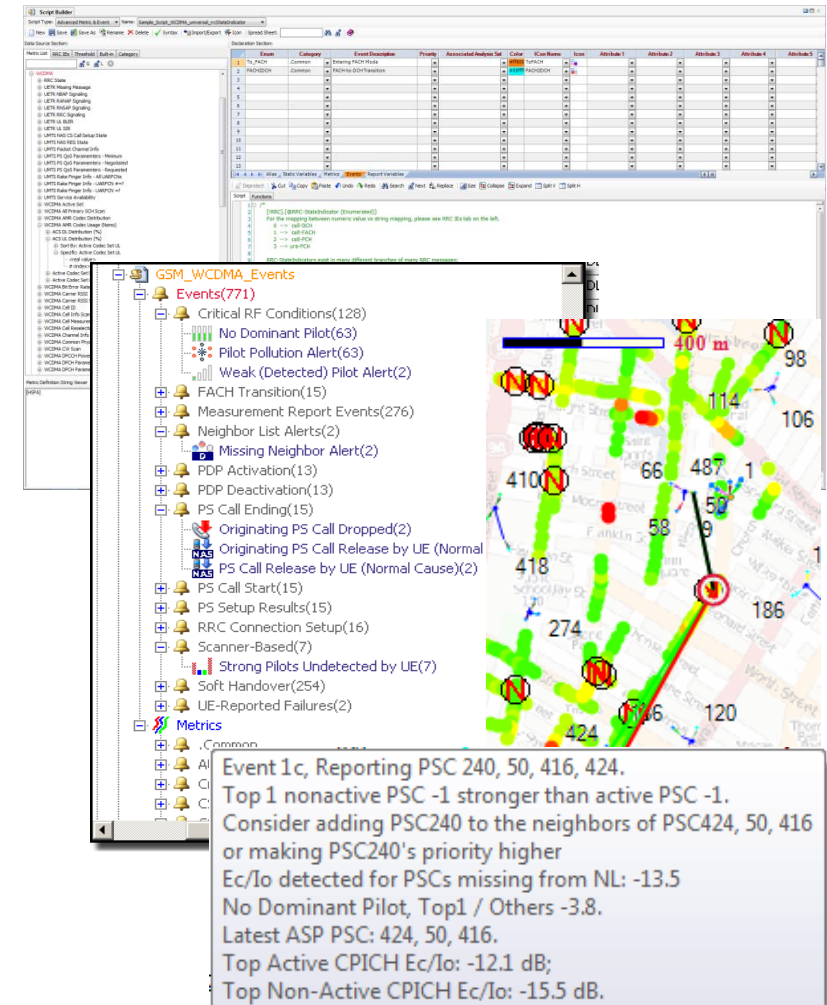
AUTOMATIC DATA PROCESSING

- Monitoring and processing of incoming data
- Automatic creation of multiple projects and data sets according to user's configuration
- Automatic creation of KPI plots and reports
- Automatic email notifications to multiple recipients
- Multiple tasks can be configured
- Easy and flexible configuration



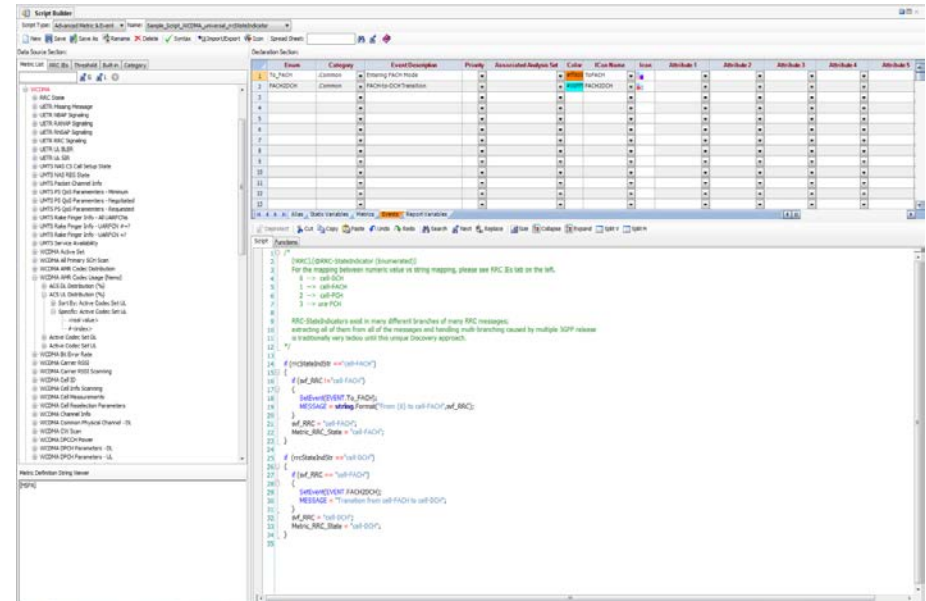
SCRIPTING

- Predefined or user-defined scripts
- Used for problem finding, analysis, and reporting
- Simple use of predefined scripts for pinpointing pilot pollution, missing neighbors, dropped calls, etc.
- Use Script Builder to create your own tailored scripts for automated problem finding
- Findings displayed in Map View (or any other view) and included in a report



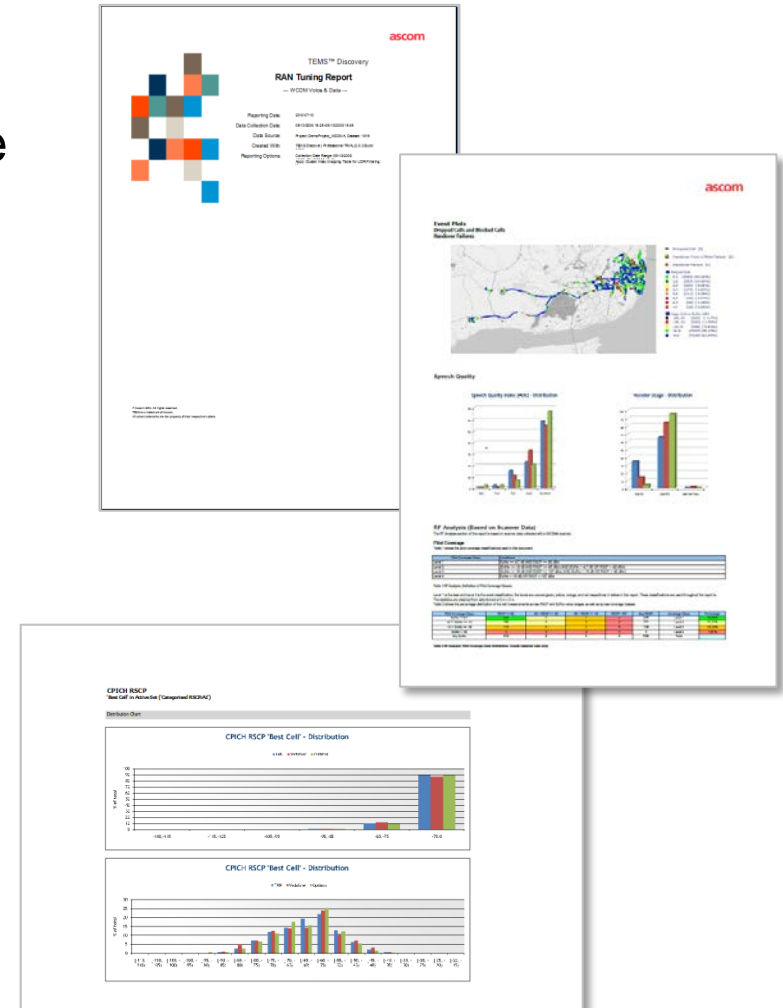
SCRIPT BUILDER

- Simple drag-and-drop access to
 - All metrics and events
 - All IEs in Layer 3 messages
- Built-in functions, flags, and classes for easy script creation
- Embedding of proprietary algorithms for standardization across the organization
- Generation of any metrics, events, and report variables



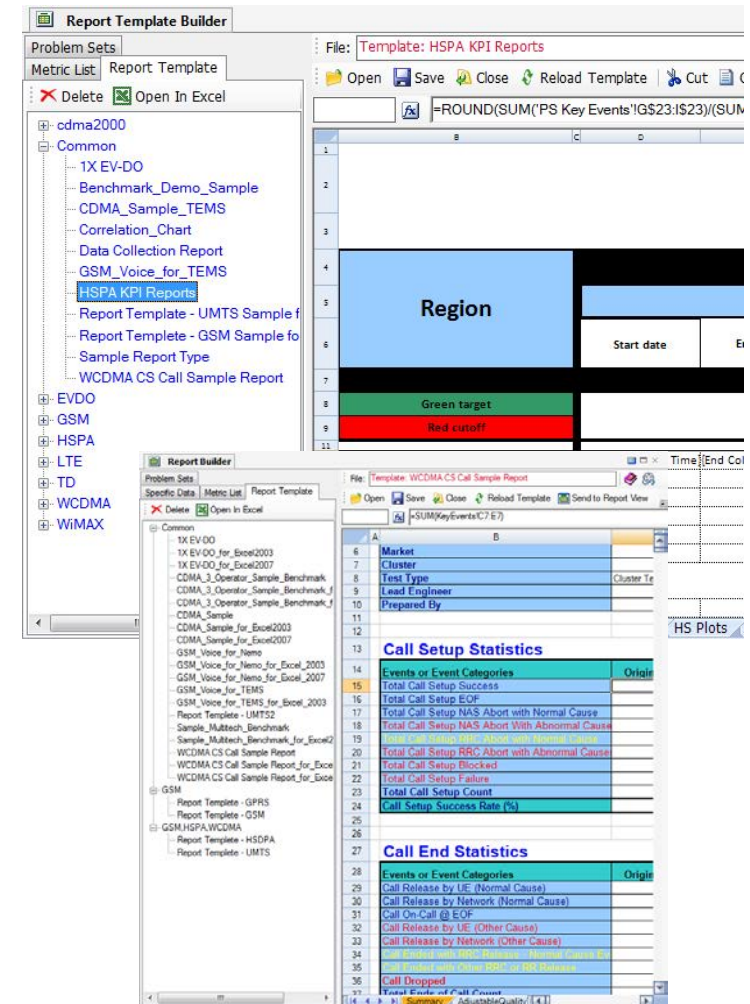
REPORTING

- Predefined and user-defined report templates
- Generate report on any data set, file, or device
- Scheduled or immediate generation of report based on selected template
- Create your own tailored report templates for specific interests and needs
- Sample report types:
 - TEMS acceptance reports
 - TEMS RAN tuning reports (WCDMA and/or GSM, voice and/or data)
 - ETSI KPI reports
 - Benchmarking reports



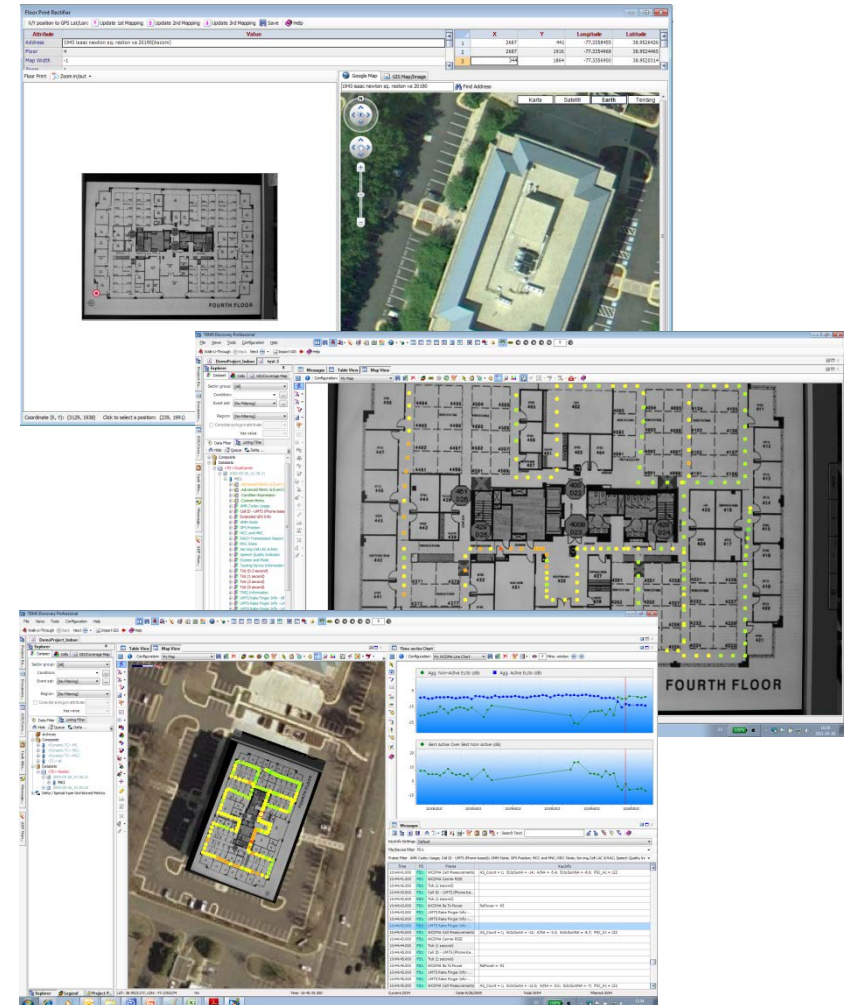
REPORT BUILDER

- All TEMS Discovery events and metrics
 - Full array of statistical attributes
 - Drag and drop to any desired cells
- All Microsoft Excel® functions
 - Formulas and equations
 - Styles and formatting
 - Charting
- Data filtering per any file/device attributes
 - Operators: for benchmarking
 - Date: for trending
- Uses universal templates or specific data
- Auto-grow functions



INDOOR MAPPING FUNCTIONALITY

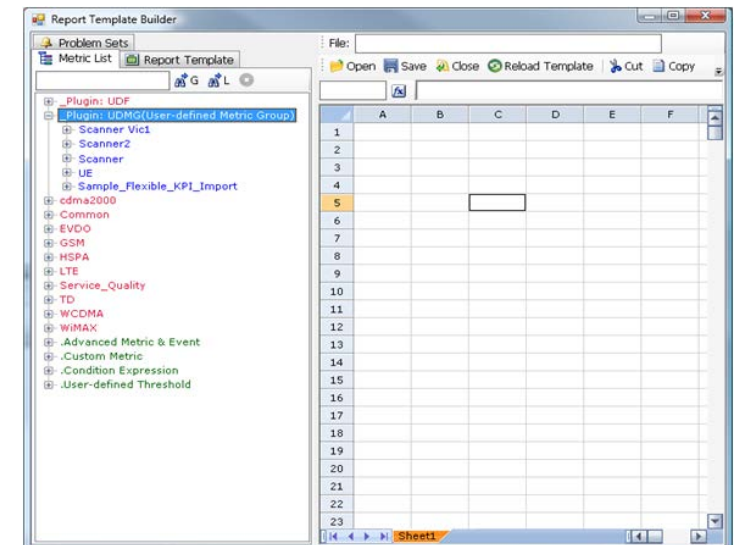
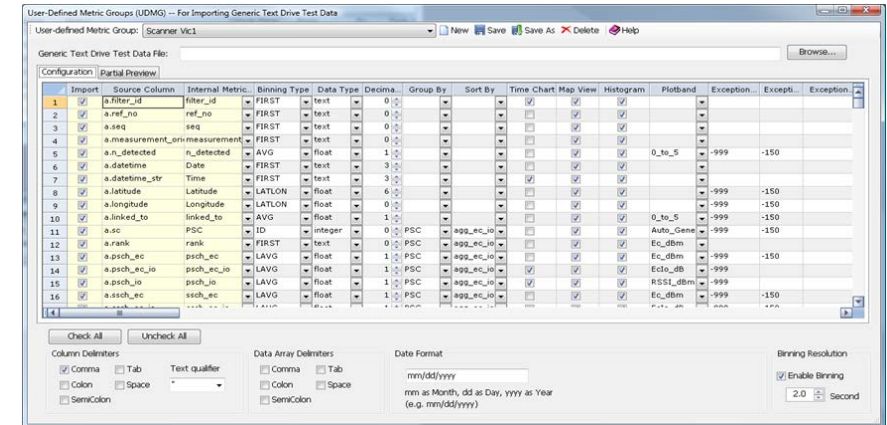
- Seamless import of TEMS Pocket and TEMS Investigation maps and logfiles
- Logfiles, bitmap floor plan images, and metadata all in one zip file
- Simply drag and drop metric into Map View and the metric is displayed on the corresponding floor plan image
- Simple three-step geolocation of map and measurements
- Repositioning of indoor waypoints to improve the appearance of the measurements on the map



GENERIC TEXT FILE IMPORT

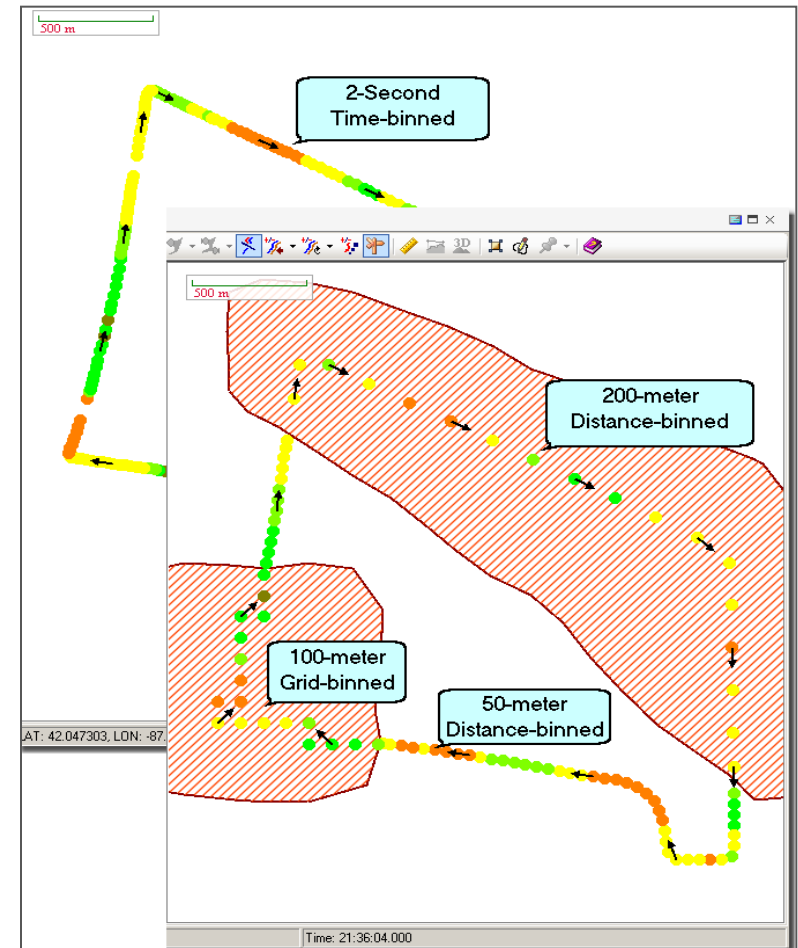
Flexible delimited text file import:

- Create user-defined metric groups
- Define group-by and sort-by keys
- Exclude exception values
- Manipulate data in various views in essentially the same way as other standard metrics



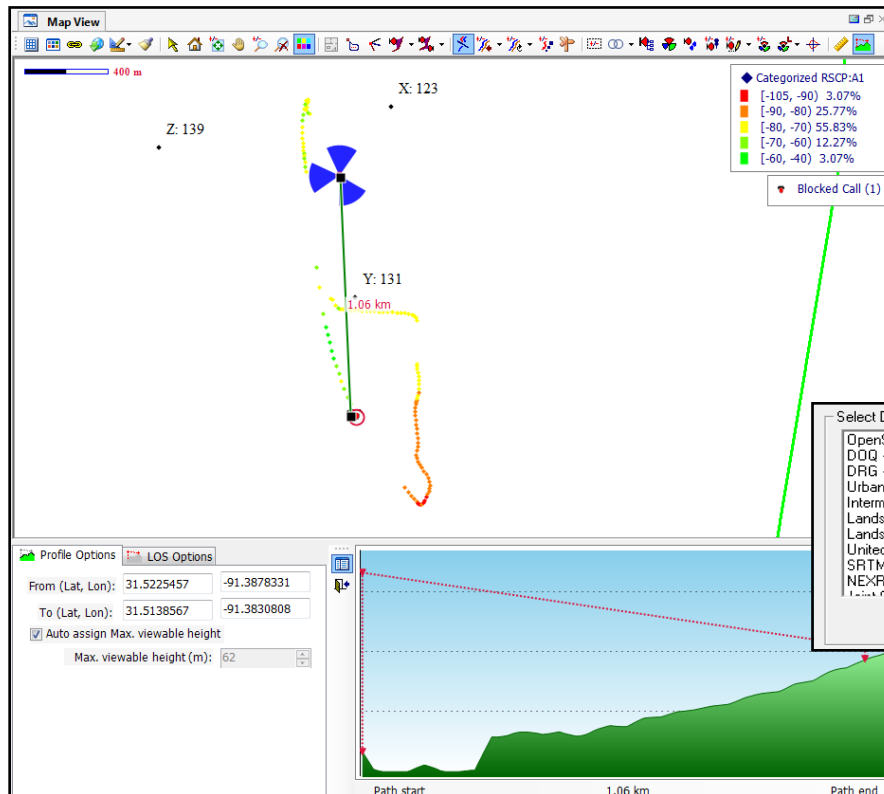
VERSATILE DATA BINNING

- Time binning during data import
 - Frame level resolution
 - Smart selection
 - No binning for event-triggered messages
 - Binning for periodic messages
- Geo-binning
 - Distance binning
 - Grid binning
 - Per-region mixed resolution (example: fine resolution in dense urban areas and coarse resolution in rural areas)

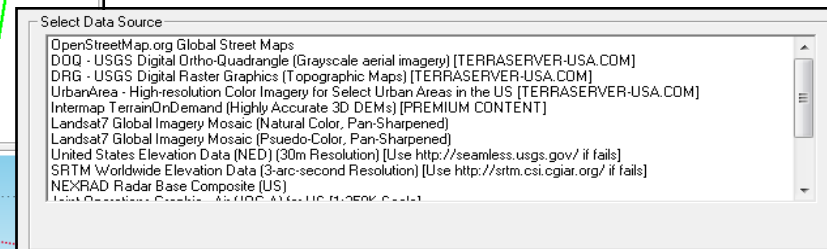


LINE-OF-SIGHT TOOL

- Line of sight between two points in Map View is possible with terrain elevation data

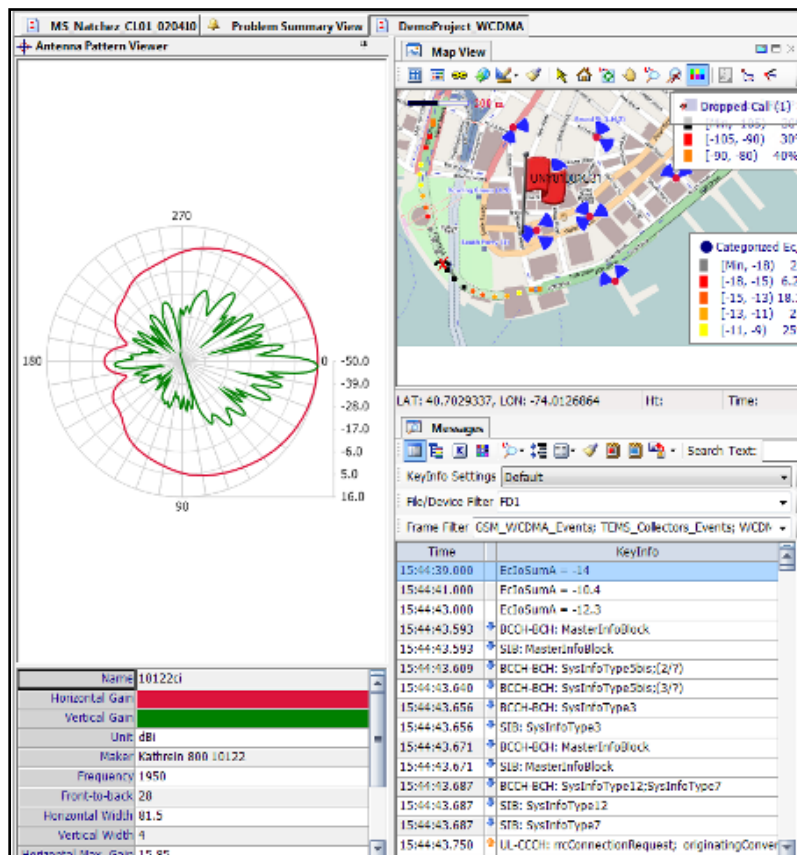


User can download elevation data from many free Web databases



ANTENNA PATTERN VIEWER

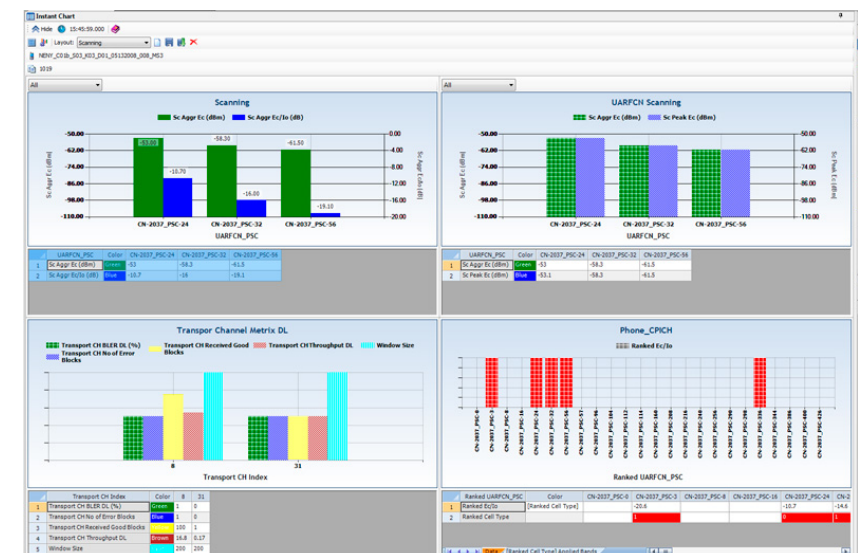
- Preloaded antenna pattern can be displayed for each antenna



INSTANT CHART

- The Instant Chart monitor is a user-configurable monitor to graphically display a set of array data.
- Multiple configurations
- Instant Bar Chart View with optional table view
- Multiple chart space & multiple metrics
- Fixed or metric-based coloring
- Sample Usage:
 - Scanner or phone data: Ec/Io, RSCP for all pilots for one or multiple UARFCNs
 - Transport Channel Information: Configuration, state, throughput of concurrent channels
 - Adjacent channel analysis: Graphically visualize channel strength of adjacent channels

Key	Metric	Displayed Name	Display Color	Display Pattern	Min	Max
1	Center Channel ARFCN [Mds][GSM][GSM Adjacent Channel Scanning][C/A +1]	C/A +1	Green	Cross	-200	200
2	Center Channel ARFCN [Mds][GSM][GSM Adjacent Channel Scanning][C/A +2]	C/A +2	Blue	DarkDownward	-200	200
3	Center Channel ARFCN [Mds][GSM][GSM Adjacent Channel Scanning][C/A +3]	C/A +3	Yellow	DarkHorizontal	-200	200
4	Center Channel ARFCN [Mds][GSM][GSM Adjacent Channel Scanning][C/A -1]	C/A -1	Brown	DarkUpward	-200	200
5	Center Channel ARFCN [Mds][GSM][GSM Adjacent Channel Scanning][C/A -2]	C/A -2	Cyan	DarkVertical	-200	200
6	Center Channel ARFCN [Mds][GSM][GSM Adjacent Channel Scanning][C/A -3]	C/A -3	Alcoblue	DashedDownward	-200	200
7	Center Channel ARFCN [Mds][GSM][GSM Adjacent Channel Scanning][C/A Worst]	C/A Worst	AntiqueWhite	DashedHorizontal	-200	200
8	Center Channel ARFCN [Mds][GSM][GSM Adjacent Channel Scanning][Center ARFCN Rule]	Center ARFCN Rule	Aqua	DashedUpward	-200	200
9	Center Channel ARFCN [Mds][GSM][GSM Adjacent Channel Scanning][Center ARFCN Rule Or]	Center ARFCN Rule Or	Aquamarine	DashedVertical	-200	200
10	Center Channel ARFCN [Mds][GSM][GSM Adjacent Channel Scanning][Center ARFCN+1 Rule]	Center ARFCN+1 Rule	Blue	DiagonalDown	-200	200
11	Center Channel ARFCN [Mds][GSM][GSM Adjacent Channel Scanning][Center ARFCN+1 Rule Or]	Center ARFCN+1 Rule Or	Beige	DiagonalUp	-200	200
12	Center Channel ARFCN [Mds][GSM][GSM Adjacent Channel Scanning][Center ARFCN+2 Rule]	Center ARFCN+2 Rule	Black	Diamond	-200	200
13	Center Channel ARFCN [Mds][GSM][GSM Adjacent Channel Scanning][Center ARFCN+2 Rule Or]	Center ARFCN+2 Rule Or	Black	DottedDiamond	-200	200
14	Center Channel ARFCN [Mds][GSM][GSM Adjacent Channel Scanning][Center ARFCN+3 Rule]	Center ARFCN+3 Rule	Blanche	DottedGrid	-200	200
15	Center Channel ARFCN [Mds][GSM][GSM Adjacent Channel Scanning][Center ARFCN+3 Rule Or]	Center ARFCN+3 Rule Or	Blanche	ForwardDiagonal	-200	200
16	Center Channel ARFCN [Mds][GSM][GSM Adjacent Channel Scanning][Center ARFCN+4 Rule]	Center ARFCN+4 Rule	BurlyWood	Horizontal	-200	200
17	Center Channel ARFCN [Mds][GSM][GSM Adjacent Channel Scanning][Center ARFCN+4 Rule Or]	Center ARFCN+4 Rule Or	CadetBlue	HorizontalBrid	-200	200



[]

SUMMARY



IMPROVE OPERATIONAL EFFICIENCY WITH TEMS DISCOVERY

- Flexible and innovative post processing
- Liberating precious and expensive RF engineering resources so they can focus on troubleshooting
- Share best practices within the organization



The world's most versatile data processing tool

LEGAL DISCLAIMER

This document contains specific forward-looking statements, e.g. statements including terms like “believe”, “expect” or similar expressions. Such forward-looking statements are subject to known and unknown risks, uncertainties and other factors which may result in a substantial divergence between the actual results, financial situation, development or performance of Ascom and those explicitly presumed in these statements.

Against the background of these uncertainties readers should not rely on forward-looking statements. Ascom assumes no responsibility to update forward-looking statements or adapt them to future events or developments.

[]

THANK YOU!

